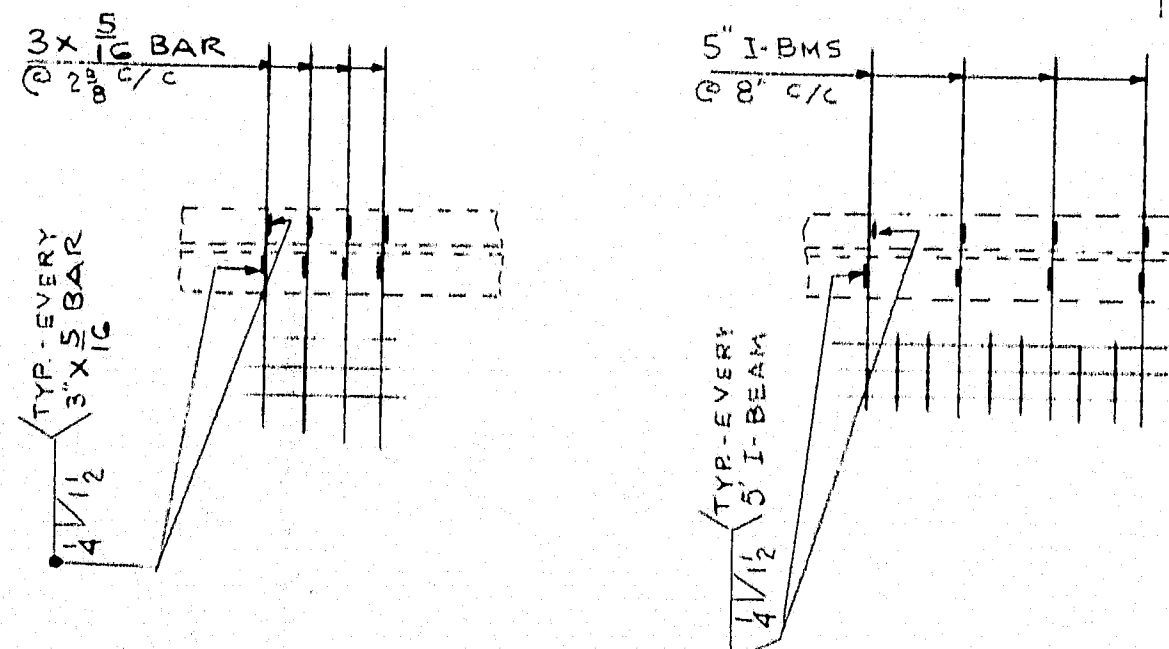


ERECTION PLAN
 5 WELDLACK OPEN BRIDGE FLOORING - TYPE H
 3 x 5/8 RECTAGRID OPEN BRIDGE FLOORING - TYPE 1255

NOTE TO ERECTOR
 ERECT PANELS WITH MARK NOS IN CORRESPONDING POSITION AS SHOWN ON PLAN

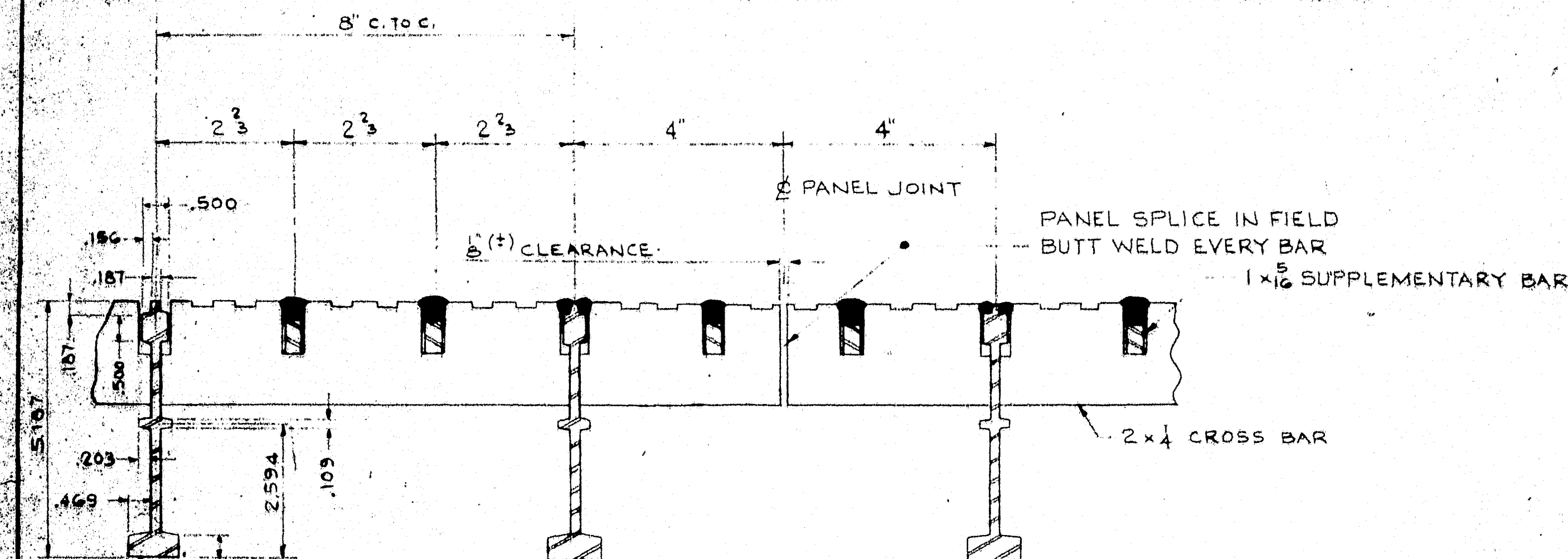


NOTES

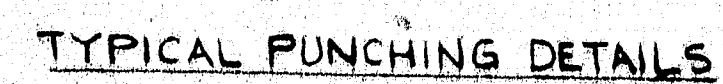
1. ALL STEEL SHALL CONFORM TO A.S.T.M. SPEC A36.
2. ALL WELDING SHALL BE DONE IN ACCORDANCE WITH THE CURRENT SPECS. OF THE AMERICAN WELDING SOCIETY FOR WELDED HIGHWAY AND RAILWAY BRIDGES.
3. FOR TYPICAL DETAILS OF 5' OPEN FLOORING (TYPE H) SEE DWG A2775 SHT 2 OF 3.
4. FOR TYPICAL DETAILS OF 3 x 5/8 RECTAGRID FLOORING (TYPE 1255) SEE DWG A2775 SHT 3 OF 3.
5. FINISH - ONE SHOP COAT T-779 RED LEAD PRIMER.

PROJECT: SOUTHPORT BRIDGE OVER TOWNSEND GUT
 BETWEEN SOUTHPORT AND BOOTHBAY HARBOR, MAINE

CUSTOMER MAINE STATE HIGHWAY COMMISSION		RELiance STEEL PRODUCTS COMPANY	
MCKEESPORT, (PITTSBURGH DISTRICT) PA.		BRIDGE DEPARTMENT	
ORDER NO. 19-10719TH		TITLE: PLAN OF 5 WELDLACK (TYPE H) / 3 x 5/8 RECTAGRID (TYPE 1255)	
REFERENCE DRAWINGS STATE HIGHWAY COMMISSION SHT 1 OF 1		LOCATION: SOUTHPORT & BOOTHBAY HARBOR, AUGUSTA, MAINE	
DRAWN R.J.	12-15-72	APPROVED BY V.K. Hays	DWG. NO. A2775
CHECKED D.J.	12-21-72		SHT 1 OF 3
TRACED			CONTRACT NO. 18070

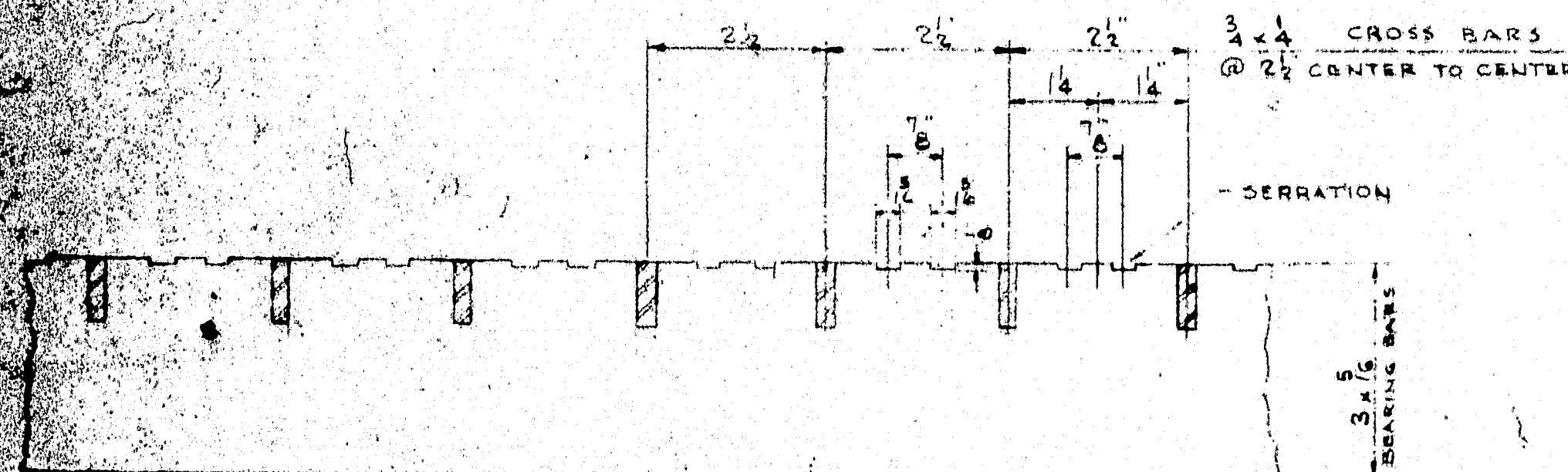


RELIANCE SPECIAL SECTION - M4997
AT 8' CTRS. - 5.542" FT.
ALL DIMENSIONS SUBJECT TO
MILL TOLERANCES



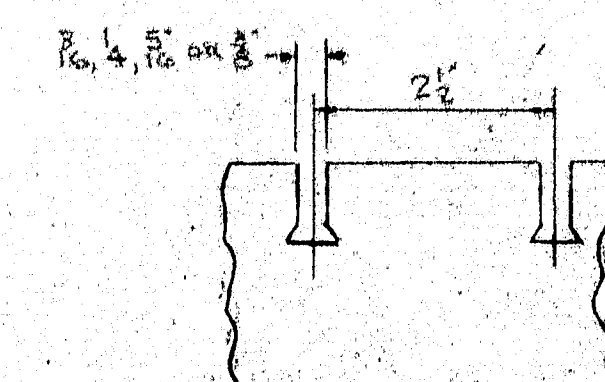
NOTE
CENTER TO CENTER DIMENSION OF CROSS
BARS SHALL BE AS SHOWN. DIMENSION FOR
1ST AND LAST CROSS BAR FROM EDGE OF
PANEL MAY VARY TO SECURE ALIGNMENT.

130-31



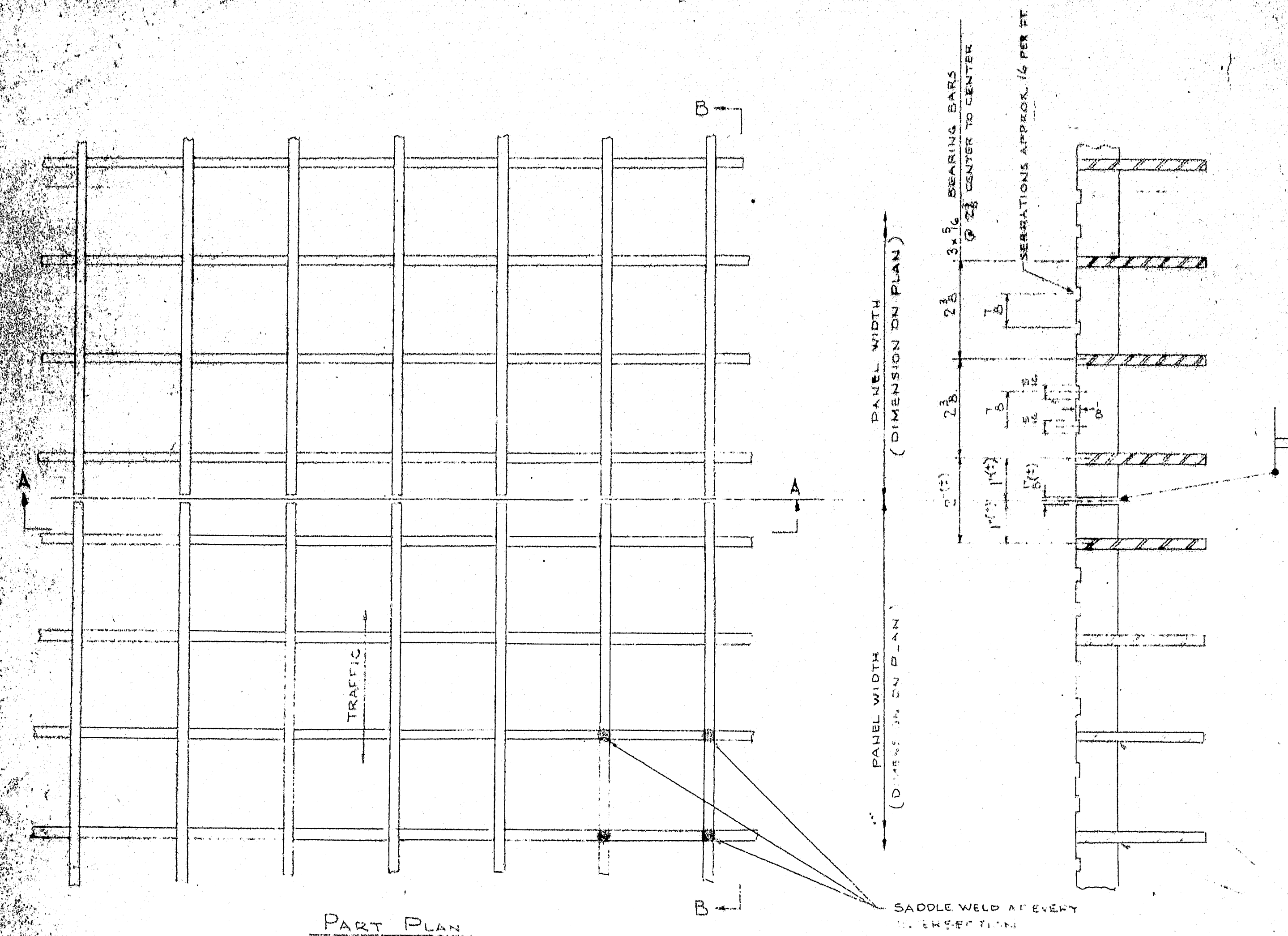
TYPE 1255 RECTAGRID BRIDGE FLOOR

CENTER TO CENTER DIMENSION OF CROSS BARS SHALL BE AS SHOWN. DIMENSION FOR 1ST AND LAST CROSS BAR FROM EDGE OF PANEL MAY VARY TO SECURE ALIGNMENT.



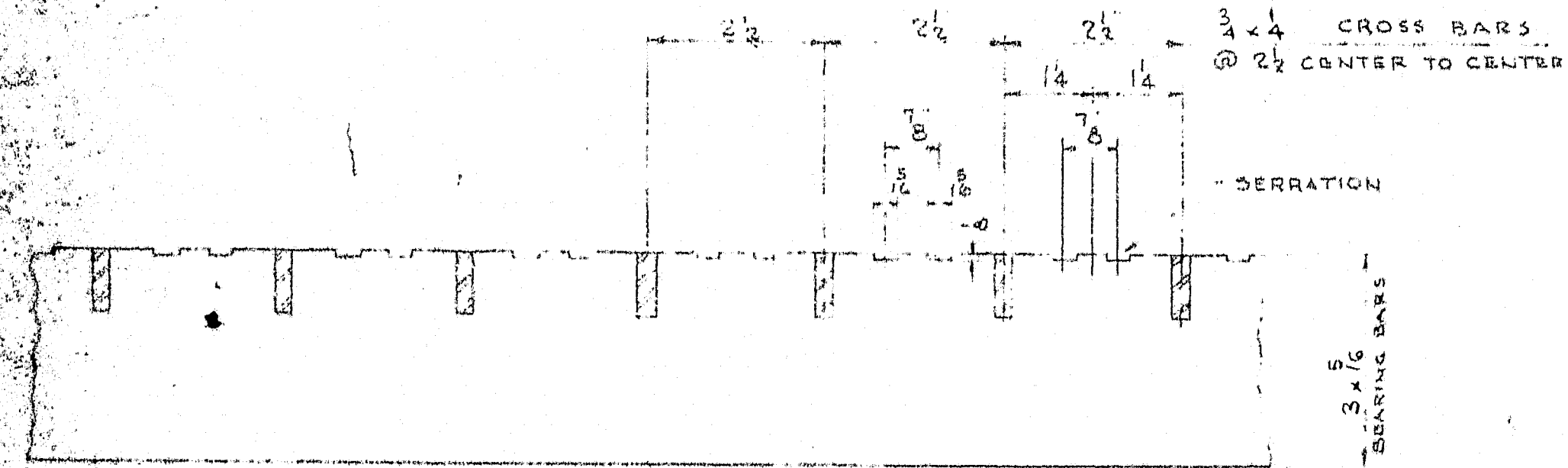
BEARING BAR
PUNCHING DETAILS

[illegible]



SECTION B-B

ELECTRO PRESSURE
WELDED

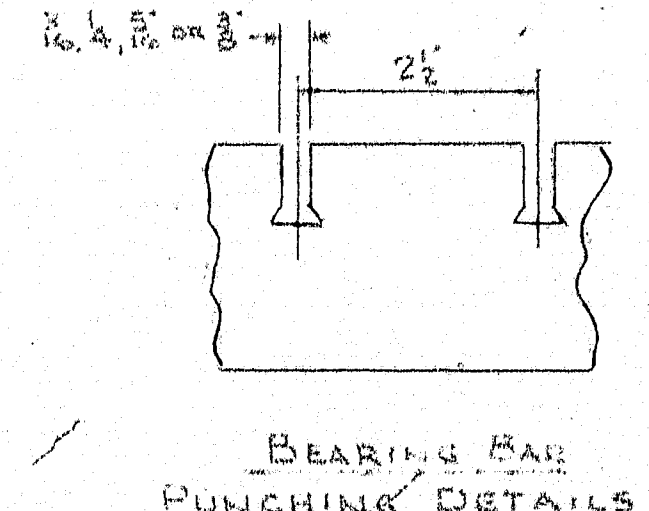


SOUTHPORT BRIDGE OVER TOWNSEND GUT
BETWEEN SOUTHPORT AND BOOTHBAY HARBOR, MAINE

SECTION A-A
TYPICAL DETAILS OF FLOORING
INCLUDING DETAILS OF TRAFFIC

TYPE 12 S5 RECTAGRID BRIDGE FLOOR

NOTE
CENTER TO CENTER DIMENSION OF CROSS BARS
SHALL BE AS SHOWN FOR 1" AND LAST
CROSS BAR FROM END OF PANEL MAY VARY TO
SECURE ALIGNMENT.



MANUFACTURING TOLERANCES				CUSTOMER			
PANEL WIDTH & LENGTH ± 1/8"	LONGITUDINAL CAMBER IN PER FT	BEARING BAR LEAN 1" IN 12'	CROSS BAR SPACING ± 1/8"	MAINE STATE HIGHWAY COMMISSION			
OUT OF SQUARE ± 1/8"	BEARING BAR AND CROSS BAR SPACING ± 1/8"			BELIANCE STEEL PRODUCTS COMPANY			
TRANSVERSE BOW ± PER FT				McKEESPORT, (HITCHCOCK) MAINE			
				THIS TYPICAL ESTIMATION DETAILS TYPE 12 S5			
				LOCATION			
				DRAWN BY S.D. 10/1/51			
				CHECKED BY J.H.M. 10/1/51			
				APPROVED BY V.E. HAN 10/1/51			
				DATE NO. A1775			
				SHEET 3 OF 3			
				18070			

130-32